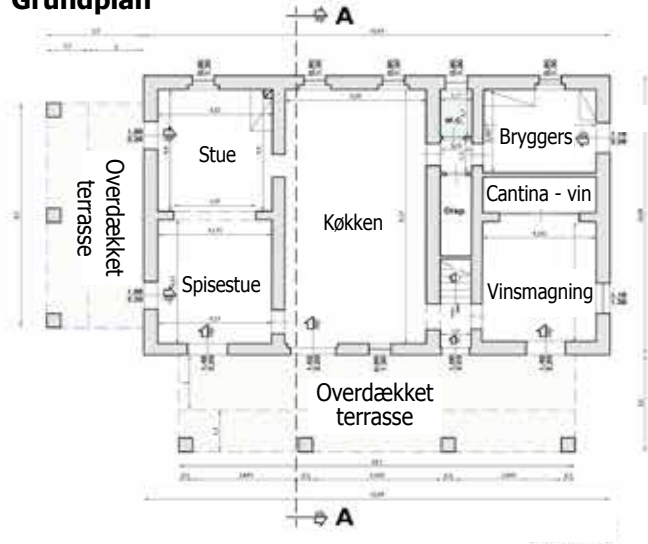


# Plantegninger

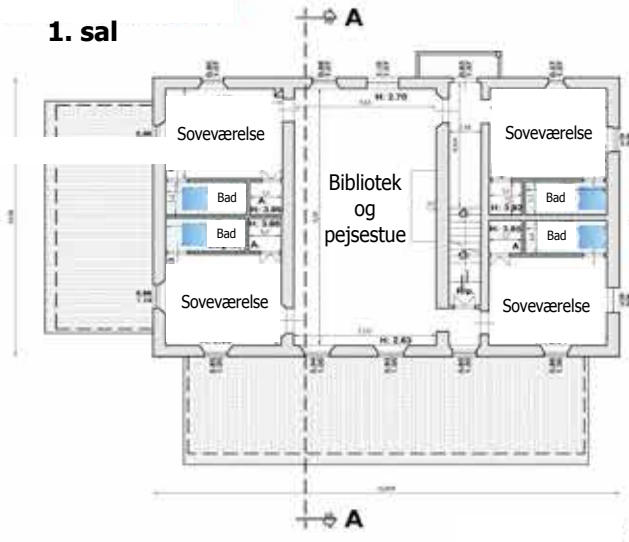
Her er arkitektens skitser over, hvorledes Podere Mille Stelle vil være indrettet, når den er indflytningsklar.



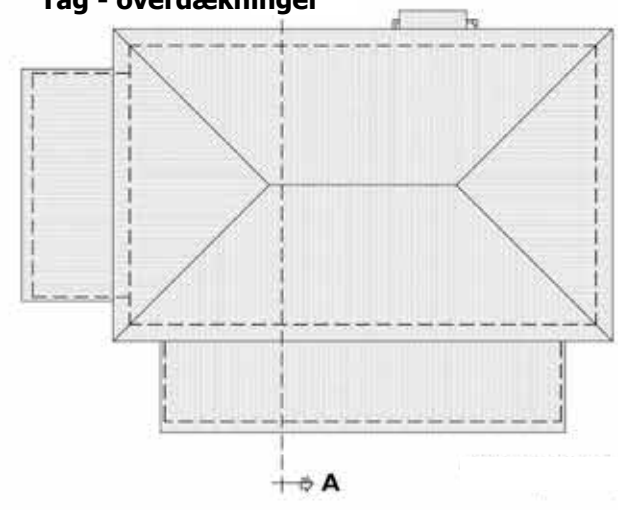
### Grundplan



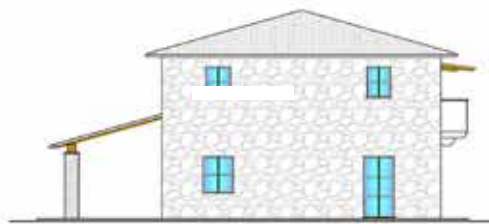
### 1. sal



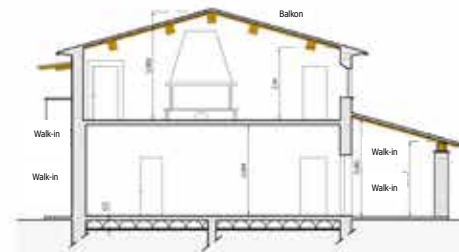
### Tag - overdækninger



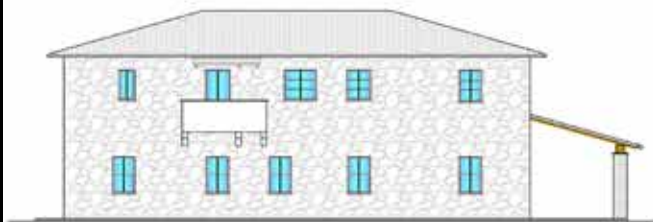
### Facade mod syd



### Facade mod øst



### Snittegning A-A



### Facade mod nord



### Facade mod vest

Vejledende tegninger uden ansvar.  
Tegningerne er ikke målfaste.